

Creating new application

There are two different ways to create custom application that may be used within [EPISODES Platform](#). The first option is to use the Platform's dedicated wizard which suggests required elements and parameters to fill in the created application. The second option (recommended only for advanced users) is to create a [Git repository](#) using only the [Application Workbench](#) and then create and add required files by hand.



Contents of this guide

With this guide you will learn how to create your own application that could be later used within the EPISODES Platform. Depending on your choice, you can create the application using [automated tools](#) provided by the Platform (recommended) or you can create it [manually](#), by first, creating a repository and then adding the required files. This guide will also tell you how to [check whether the application was created correctly](#). To learn how to edit the application files after it is created, please check [this guide](#).

Creating a new application with dedicated wizard

The dedicated wizard offered by the EPISODES Platform will allow you to create a new application using some pre-set values and to generate all the files required for connecting an application to the EPISODES Platform in a correct form - the descriptor files will be generated using the values you choose, along with a stub of the application code matching the descriptor. Note, that we recommend using the wizard even if you already have a good knowledge of [GIT](#) and [Application Workbench](#), as, in this way, we can ensure the application's repository contains all required files and that they are correct in relation to one another. The manual repository creation is recommended only in case you already have your code in a local GIT repository and want to connect it to the Application Workbench (and, ultimately, to EPISODES Platform).

To create a new application using the wizard, log in to the [EPISODES Platform](#) and go to *My Apps* tab (note, that it will not be visible before logging in to your account). Once there, use the *Create New Application* button (Figure 1) to open the wizard (Figure 3).

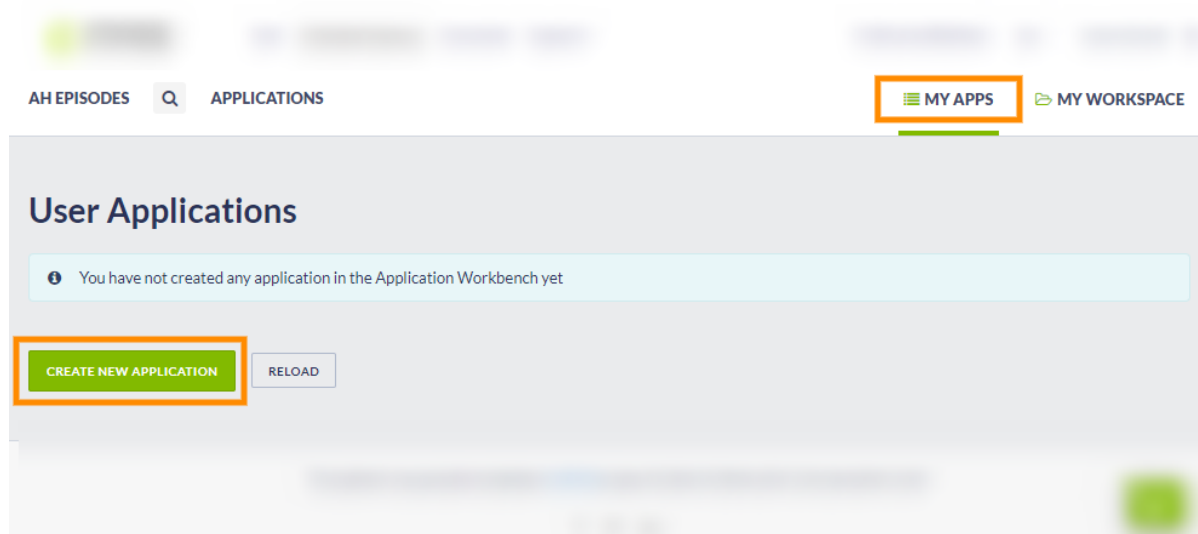


Figure 1. *User apps* tab in EPISODES Platform with *Create new application* button marked

Note, that if you do not see the *Create new application* button, and instead of the blue information panel, you have a red or yellow error message as shown on Figure 2, your Application Workbench account is not configured correctly. Use the [Creating Application Workbench account](#), to check if you completed all required actions.

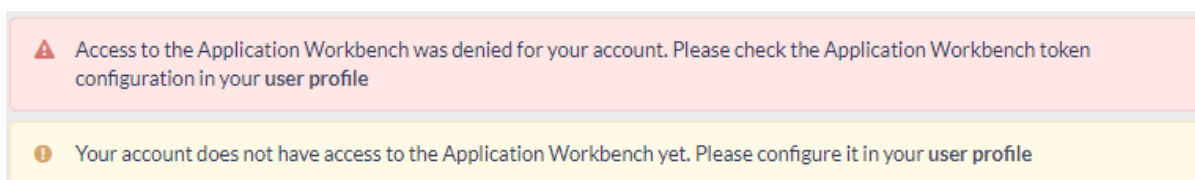


Figure 2. Messages displayed when the Application Workbench account is not properly configured

Once you choose to create a new application, a configuration page will be displayed (Figure 3). The panel on the left (marked with **(1)** in Figure 3) contains forms for filling the fields that will be used to construct the [Application Description file](#) and the stub of the main execution script compatible with it. A brief description of each field can be found when hovering over the information (i) icon next to it, and a detailed description can be found in the [Application Description file guide](#). For the multiple input fields, the *Add* buttons and trash icons next to them are used to add or, respectively, remove values (see also a filled form in Figure 4). The *Add application description* box (marked with **(2)** in Figure 3) toggles displaying a form for specifying the [Application Description](#) (see Figure 5). After all the values are filled, use the *Create* button (within controls marked with **(3)** in Figure 3) to trigger the creation of application. If the process is successful, you will come back to the initial *User apps* view (Figure 1), but the the new application should be visible on the list of applications under the name you specified as *Application repository name*. See also [this section](#) to see how to check if the application was created correctly. Note, that one of the reasons of failure when creating the application could be using a name of an application that already exists as the *Application repository name*. The name of the new application has to be unique among your all applications.

The information below will be used to create your new application. The application is created as a new repository in [Application Workbench](#). The repository has to contain an application definition file and, optionally, application description file, which will be created based on your input in the form below. We will also create a stub of the application executable script, which you will use to implement the application logic. For more information on creating an application, please consult [this guide](#).

Application repository name **(1)** TestApp

Programming language **(1)** MATLAB

Function name **(1)** my_app

Executable file name **(1)** my_app.m

Required tools **(1)** matlab

Input files **(1)** ADD

Input parameters **(1)** ADD

Outputs **(1)** ADD

Computational resources **(1)** ADD

☐ Add application description **(2)**

CREATE Clear **(3)**

Figure 3. View of the new application wizard, with most important elements marked

Left: Application Definition Form

Application repository name **(1)** TestApp

Programming language **(1)** MATLAB

Function name **(1)** my_app

Executable file name **(1)** my_app.m

Required tools **(1)** matlab, matlab-signal_processing_toolbox

Input files **(1)** catalog

Input parameters **(1)** Parameter

Outputs **(1)** out_catalog

Computational resources **(1)** Computation time: 60

Right: Add new Application output

Declare in function **(1)** ☐

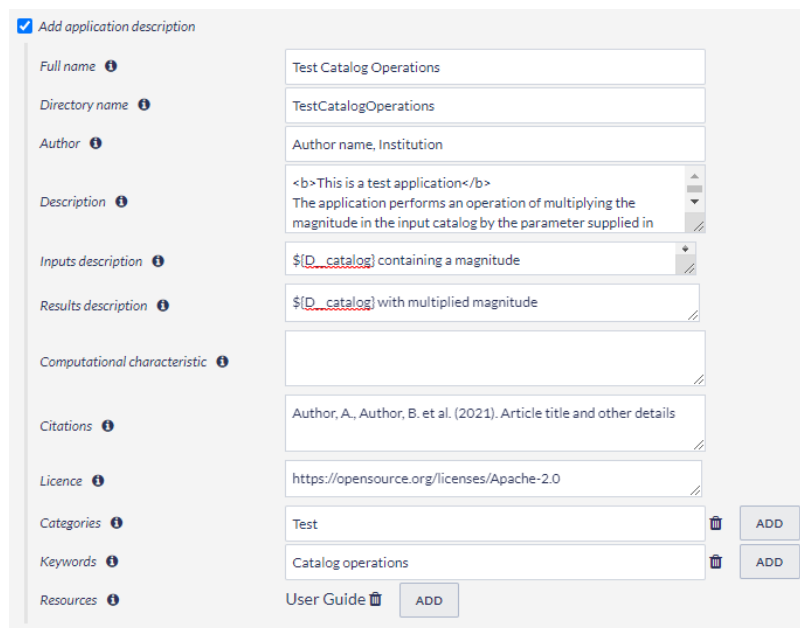
Output file name **(1)** Figure1.png

Type **(1)** Image Data (image_data)

Format **(1)** PNG

OK CANCEL

Figure 4. Left: application definition form filled with values; Right: a sample dialog window used for collecting application input information



☒ Add application description

Full name ⓘ	Test Catalog Operations
Directory name ⓘ	TestCatalogOperations
Author ⓘ	Author name, Institution
Description ⓘ	<p>This is a test application</p> <p>The application performs an operation of multiplying the magnitude in the input catalog by the parameter supplied in</p>
Inputs description ⓘ	<code>\$(D_catalog)</code> containing a magnitude
Results description ⓘ	<code>\$(D_catalog)</code> with multiplied magnitude
Computational characteristic ⓘ	
Citations ⓘ	Author, A., Author, B. et al. (2021). Article title and other details
Licence ⓘ	https://opensource.org/licenses/Apache-2.0
Categories ⓘ	Test 🗑️ ADD
Keywords ⓘ	Catalog operations 🗑️ ADD
Resources ⓘ	User Guide 🗑️ ADD

Figure 5. Application description form filled with values

In case of any uncertainty as to the meaning of any of the form fields, please consult the [Application Description file guide](#) and [Application Description file guide](#).

Creating a new application manually

When creating the new application manually, you will first have to create the repository for the application code (using one of the options specified in the subsequent subsections), and then, configure it, so that it could be recognized by the EPISODES Platform - i.e. you will have to adjust the repository contents as specified in [Custom application configuration guide](#). To add new files or edit the existing ones, please use the [Editing the application code guide](#).

The repository has to be created from the [Application Workbench](#), after logging in to it (check [this guide](#) if you do not have an account yet or have any trouble logging in). To do this, use either the menu in top right corner and the *New Repository* option or the *+* icon next to the *Repositories* list (both options marked in Figure 6).

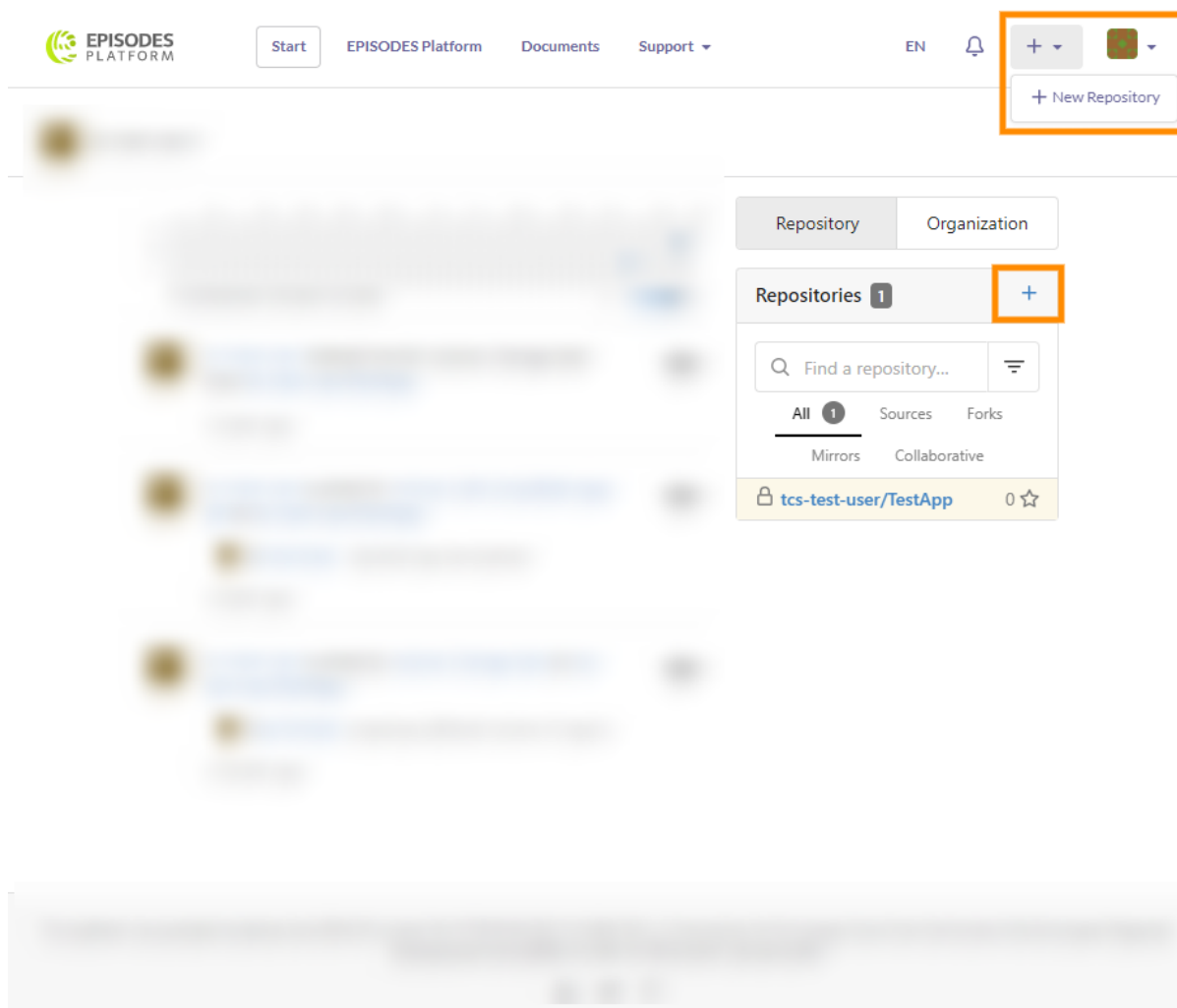


Figure 6. Main view of the Application Workbench with controls that can be used for creating a new repository marked

Using any of the new repository creation options, will result in displaying a page as shown in Figure 7. The most important elements to fill here are (also marked with numbers **1-3** in Figure 7):

- **Repository Name** (required) - the name of the repository, that will also be used as the application name. It has to be unique among your all repositories (whether created with the [EPISODES Platform wizard](#) or manually) and may contain only alphanumeric, dash, underscore and dot characters.
- **Visibility** - it is strongly recommended to mark the repository as private (check the box *Make Repository Private*). Otherwise, the repository, and thus, the application will be visible to everyone and appear on the applications list for every user. Note, that even for the private repositories, it is still possible to share the code with other (selected) users.
- **Description** - short description what the repository is containing.
- **Initialize Repository** - if this field is checked, the repository will be already initialized and some initial files will be added (a `README.md` file and a license, if you chose it) to it upon creation. This initialization will allow you to start working with the repository right away, otherwise, you will have to initialize it from your computer (see Figure 9). Do not check this field if you already have a local GIT repository and only want to publish it to the Application Workbench.

Other fields may be left empty, but if you already have an experience with systems based on GIT, such as [Github](#) or [Gitea](#), configure the repository here to your convenience.

After filling the values use the *Create Repository* button (marked with **(4)** in Figure 7) to proceed with creating the repository.

New Repository

A repository contains all project files, including revision history. Already have it elsewhere? [Migrate repository.](#) 5

Owner * tcs-test-user ▼

Some organizations may not show up in the dropdown due to a maximum repository count limit.

1 Repository Name * TestApp

Good repository names use short, memorable and unique keywords.

Visibility ☒ Your site administrator forces new repositories to be private.
Only the owner or the organization members if they have rights, will be able to see it.

2 Description Application that tests the Application Workbench functionality

Template Select a template.

Issue Labels Select an issue label set.

.gitignore Select .gitignore templates.

Choose which files not to track from a list of templates for common languages. Typical artifacts generated by each language's build tools are included on .gitignore by default.

License Select a license file.

A license governs what others can and can't do with your code. Not sure which one is right for your project? See [Choose a license.](#)

README Default

This is the place where you can write a complete description for your project.

3 ☒ Initialize Repository (Adds .gitignore, License and README)

Default Branch master

The default branch is the base branch for pull requests and code commits.

Signature Trust Model Default Trust Model ▼

Select trust model for signature verification. Possible options are:

- Collaborator: Trust signatures by collaborators
- Committer: Trust signatures that match committers
- Collaborator+Committer: Trust signatures by collaborators which match the committer
- Default: Use the default trust model for this installation

Template ☐ Make repository a template

4 Create Repository Cancel

Figure 7. View of the new application's repository creation with most important elements marked

If you checked the *Initialize Repository* (marked with **(3)** in Figure 7), upon choosing the *Create Repository* you will be taken to the main directory view of the new repository (Figure 8). At this point, you will be able to start [Editing the application code](#) to [configure](#) the application correctly.

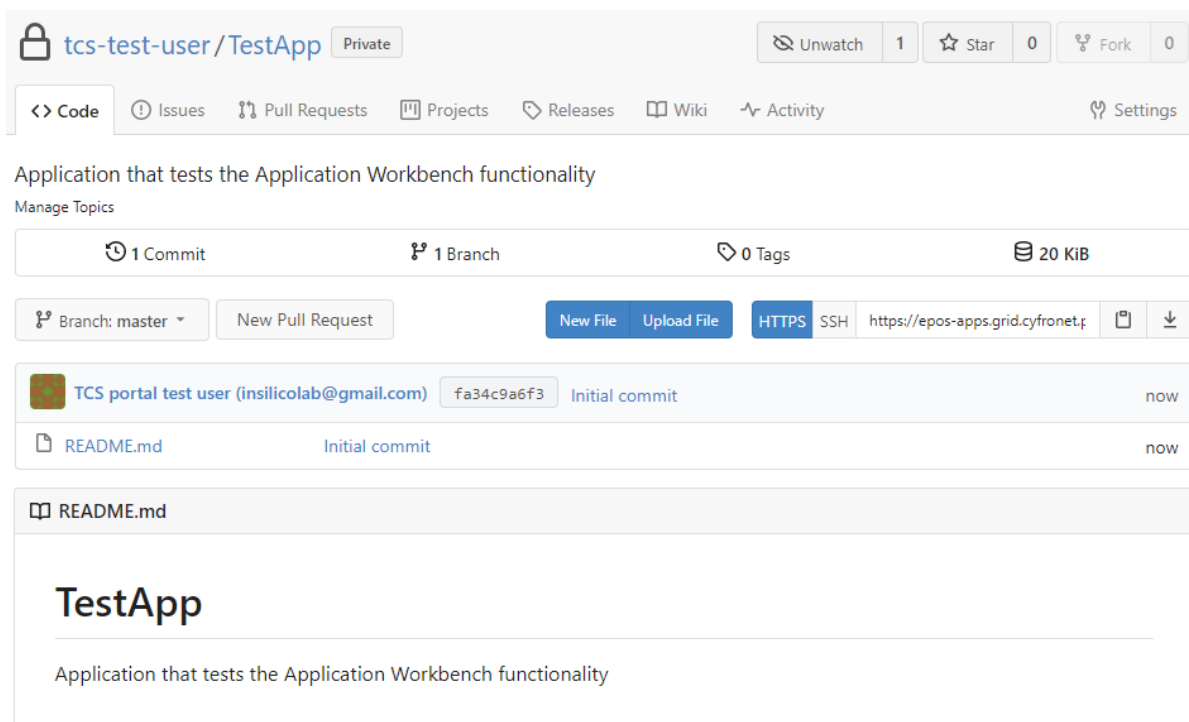


Figure 8. Main view of the new repository

If you did not check the box next to *Initialize Repository* (marked with **(3)** in Figure 7), you will be now presented with an information page on how to initialize the repository on your own (Figure 9). This option should especially be used, when you already have a local GIT repository with your application code, but may also be followed in other cases.

Quick Guide


Clone this repository

Need help cloning? Visit [Help](#).

HTTPS

SSH

<https://epos-apps.grid.cyfronet.pl/tcs-test-user/TestApp.git>



Creating a new repository on the command line

```
touch README.md
git init

git add README.md
git commit -m "first commit"
git remote add origin https://epos-apps.grid.cyfronet.pl/tcs-test-user/TestApp.git
git push -u origin master
```

Pushing an existing repository from the command line

```
git remote add origin https://epos-apps.grid.cyfronet.pl/tcs-test-user/TestApp.git
git push -u origin master
```

Figure 9. Information page containing instructions for initializing the created repository

Using an existing local repository

If you already have your application files in an initialized GIT repository, you have to create the remote repository in Application Workbench following the previous instructions, but remembering to leave the field *Initialize Repository* (marked with (3) in Figure 7) unchecked. Once the repository is created, follow the instructions displayed on the information page under *Pushing an existing repository from the command line* (see Figure 9) - i.e. invoke the following commands:

```
git remote add origin <repository_url>
git push -u origin master
```

Note, that for this mode of initializing the repository, you will have to have the GIT client installed on your computer (see also [this guide](#)).

Migrating from an existing code repository

The Application Workbench allows you also to copy an existing repository you have on a different GIT server. To do this, use the link *Migrate repository* on the new repository creation page (Figure 7, the link is marked with (5)) or follow the direct link: <https://epos-apps.grid.cyfronet.pl/repo/migrate>.

Checking that the application was created correctly

The easiest way to check the correctness of the application is to verify it from the EPISODES Platform. Once, your application is created, you will be able to see it under *User applications* in *My Apps Management* tab (Figure 10 - note that this is the same view as in Figure 1, but now you should have an application listed). Note, that if you created the repository otherwise than with the [EPISODES Platform wizard](#), using the *Reload* button might be necessary to refresh the list. Validating the application configuration might be also useful in such case (see more in [Custom application configuration guide](#)). To edit the application configuration similarly to [EPISODES Platform wizard](#), use the *Edit descriptors* button.

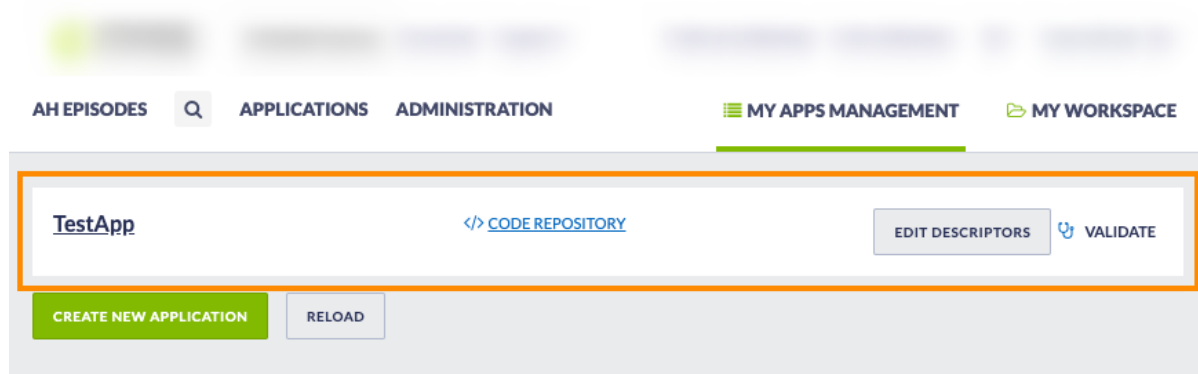


Figure 10. The new application visible on the *My Apps Management* view within EPISODES Platform

If the application was configured correctly, it should now be visible also on the list under the *Applications* tab (see Figure 11). If it is not, this might mean, that there is something wrong with either its [Application Definition](#) or [Application Description](#) file - consider validating the application and checking the [Common Issues guide](#). Otherwise, the final step is to [run your application](#).

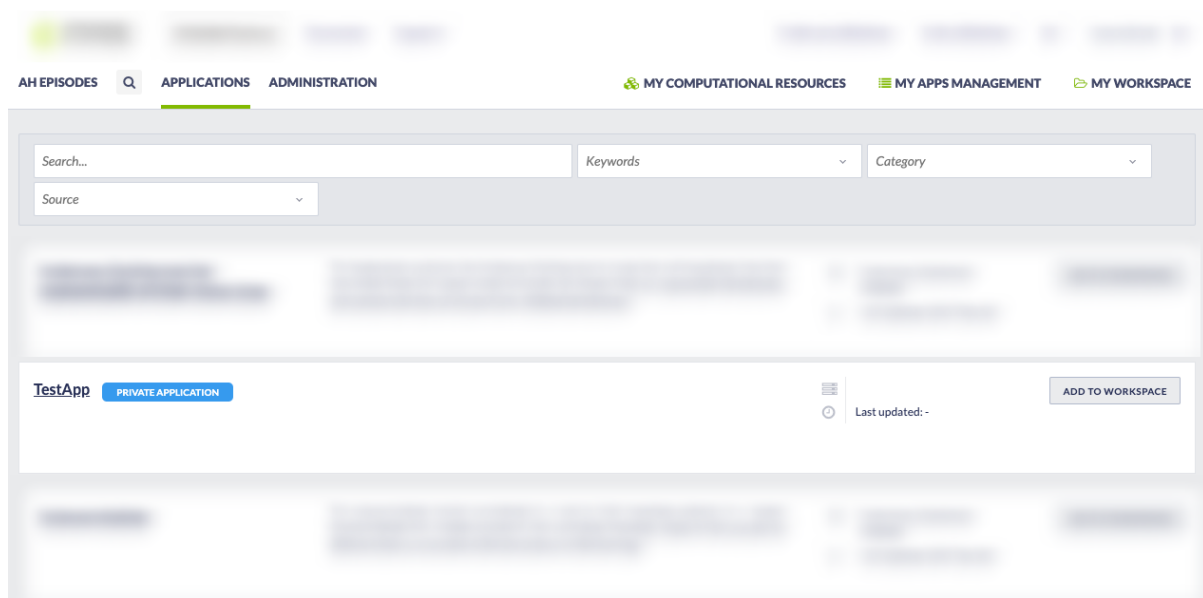


Figure 11. Application displayed correctly under the *Applications* tab

Related Documents

- [Application Definition file](#)
- [Creating Application Workbench account](#)
- [Running your custom application](#)
- [Custom application configuration](#)
- [Creating Custom Applications](#)